



# Schiedel Isokern Garden Fireplace Installation instructions

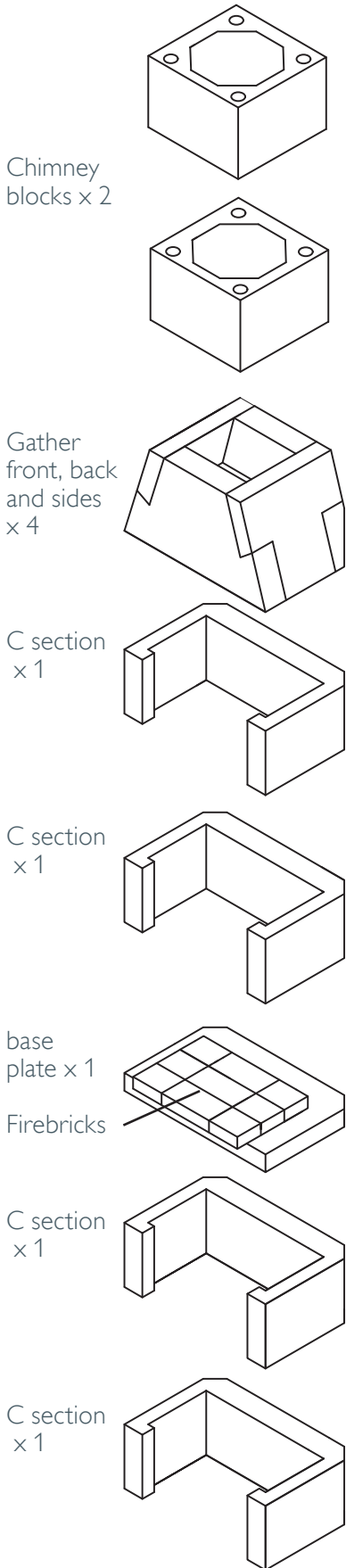
Model 500  
Build, rendering, firebricks and accessories



[www.schiedel.com/uk](http://www.schiedel.com/uk)

Photo from S. Holland and inset image from Instagram [onealchemyhouse](https://www.instagram.com/onealchemyhouse) | July 2021  
Please note that the images show the version with two optional side log stores

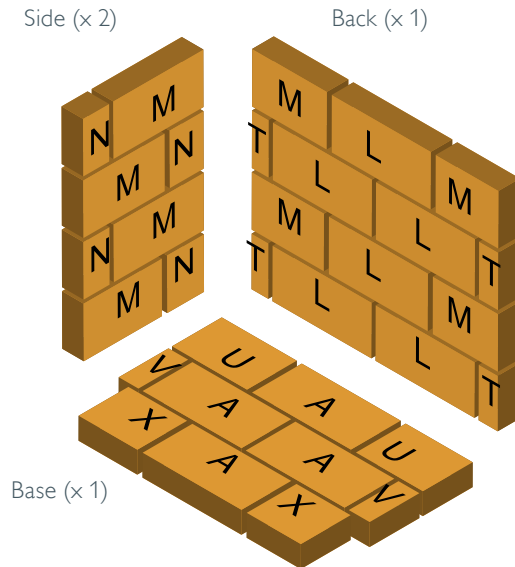
# Garden Fireplace 500



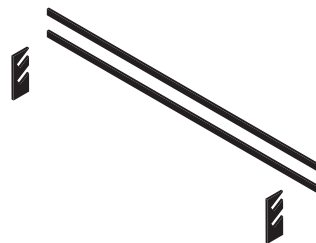
The 500 model comes complete with the following components:

- 1 bag of lip glue adhesive (for pumice components)
- 1 bag of Calderys fire brick mortar
- 1 bag of render
- 1 log retainer kit (2 metal bars + 2 fixing brackets)
- 1x grill and fixing brackets

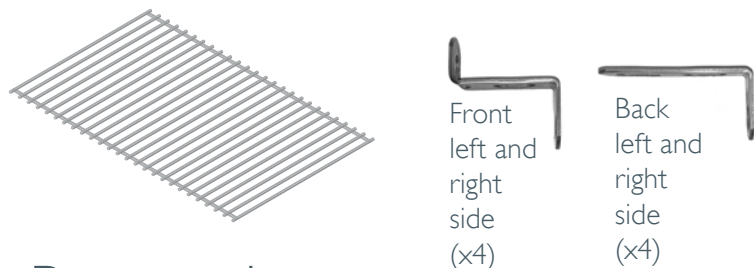
Fire brick diagram and parts (see page 6 for more details)



Log retainer kit (see page 10 for more details)



Grill and fixing brackets



## Preparation

The Garden Fire needs to be built onto a firm foundation. It should not be built directly onto decking. Schiedel recommends that a minimum 100mm reinforced concrete base is used to support the structure.

A distance of 100mm should be left between the Garden Fire and any wooden or other combustible material.

# Instructions - Log store and firechest (Step 1)



Create a suitable base. We recommend 100mm thick reinforced concrete. Bed the two C sections using the supplied lip glue adhesive. Check each stage is level.



Mix lip glue jointing adhesive as per instructions on the bag. Apply 15-20mm beads using the supplied application bag as shown in the picture above.



Apply lip glue around the top of the C section and then press the base plate down into position. Check that it is level.



Glue on the next two C sections

## Instructions - Gather unit (Step 2)



Apply lip glue to the top layer and then press the front and rear sections of the gather into place.



Apply lip glue to the joints on the sides of the front and rear panels of the gather.



Press the side panels of the gather into place.



The fireplace with the gather unit should resemble the image above.



Apply a layer of lip glue around the top of the first block and then press the second block into place. Ensure the top is level and clean off any excess glue.



Apply a layer of glue on the 2 x chimney blocks. Check all is level and wipe off excess glue.

# Instructions - Rendering (Step 3)



## Render plaster

To be mixed and adhered to the surface and smoothed by a competent person. As this is heat resistant plaster, it requires more care and pressure to spread, in comparison to traditional plaster which is much more smoother.

Render plaster is designed for one coat, if you require more coats you will need to purchase more render.



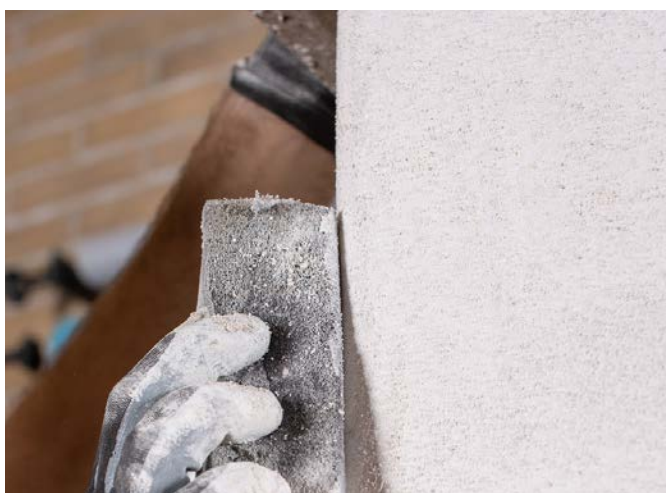
Burn off the fibres on external surface before rendering.



Mix the render as per the instructions



Render the surface areas.

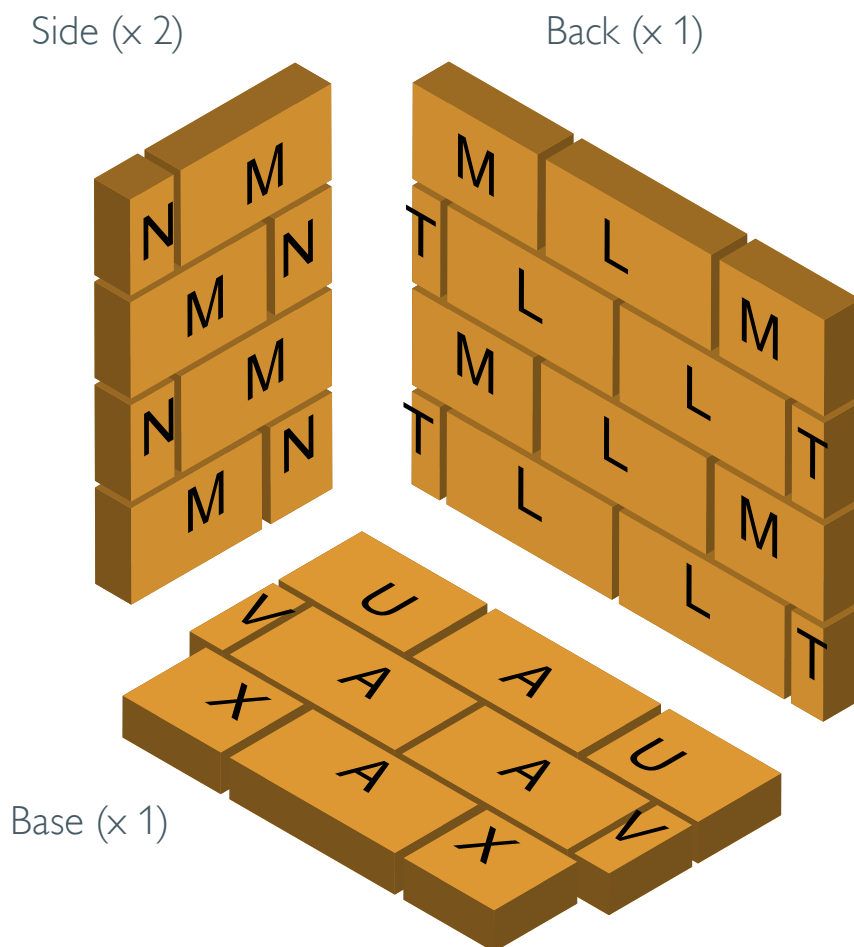


Ensure the edges are smooth and wait to dry.



# Garden Fireplace firebricks guide

## 500 model



Brick	L	W	D
A	230	114	50
L	230	114	25
M	156	114	25
N	78	114	25

Brick	L	W	D
T	35	114	25
U	154	114	50
V	35	114	50
X	124	114	50

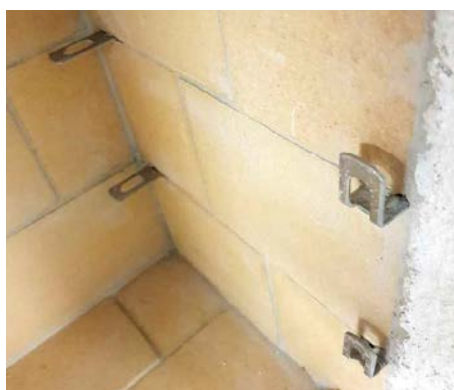
### Note for all models

8mm gap between bricks.

Bedded on 1-3mm thick firebrick mortar

Firebricks to be glued on and pointed with the Calderys firebrick mortar as per enclosed instructions

Sizes in mm



Front bracket x 4



Back bracket x 4



Prior to gluing the bricks, remember to place the 8 x brackets (2 front and 2 back brackets on each side) supported on the firebricks, before the next row of firebricks are added. These are supports for the grill.

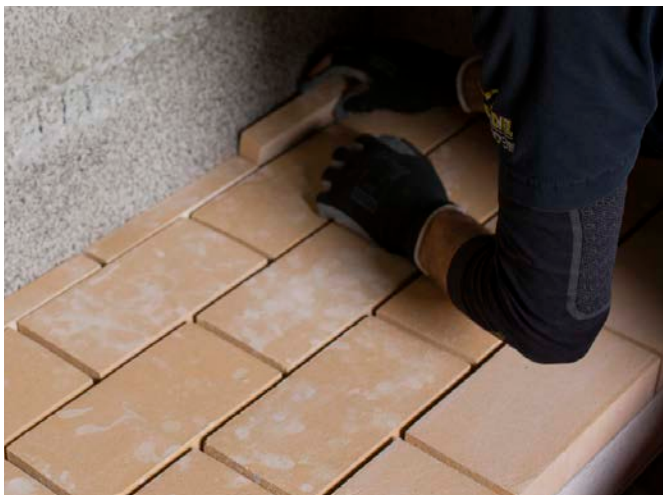
# Instructions - Firebricks and grill supports (Step 4)



Mortar bag - Used for gluing on firebricks and pointing in. Mix as per instructions on the bag



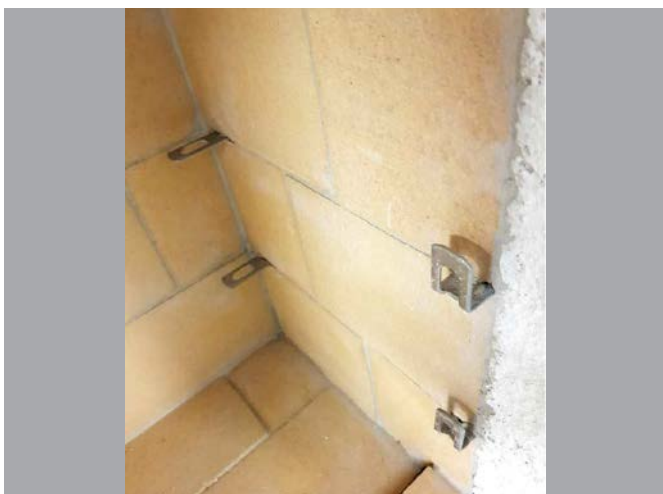
Bed the firebricks on to a 3mm layer of firebrick mortar. Use the tables on the previous page as a guide.



Complete the bottom layer of firebricks, then fasten the rear firebricks in place using the firebrick mortar. Use a tile spacer to keep an 8mm gap.



Once the bottom and rear firebricks are in place, fasten the side bricks in position using the firebrick mortar. Use a tile spacer to keep an 8mm gap. During the first and second level, you must slot in the grill supports as shown in the next step →



Inset grill support front and back brackets prior to fitting the firebricks on the side walls. These can be supported on the firebrick layer as shown.



Use the mortar mix to point up the joints between the firebricks once they are all in position. Clean off excess mortar.

## Instructions - Log retainer (Step 5)

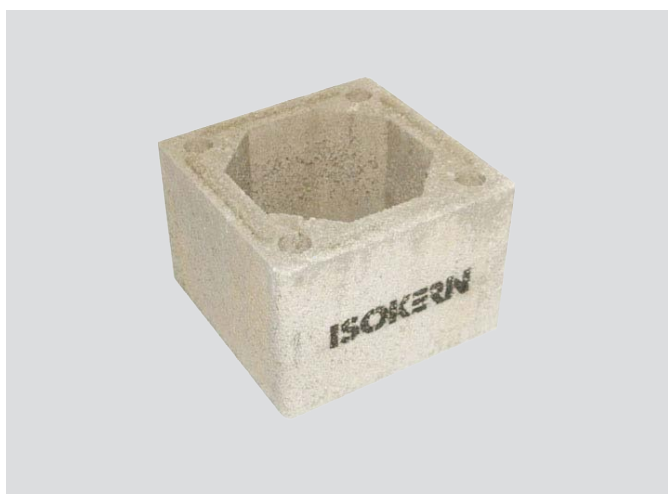


Drill 2 x 12mm diameter holes in the front row of the firebricks. Push log retainer holders in place.



Then push fit the log retainer bars into the slots.

## Optional extras



130727 Additional height blocks for 500



130710 Capping for 500 model



157838 Side log store



130732 Rain cap for all models  
135070 Top ring for 500 model



# Optional extras

If more than 1 additional log store is purchased, we recommend ordering 1 additional bag of lip glue and 1 of render.



130771 Lip glue 5kg



135329 Render plaster 25kg bag

## Instructions - Rain cap and top ring



Rain cap and top ring if purchased.



Bend the steel prongs out so the top ring is a tight push fit into the concrete capping.

## Instructions - Extra chimney blocks and capping



If extra chimney blocks are purchased, simply repeat the steps shown on p.4, applying a layer of lip glue adhesive between each block and pressing the next block firmly into place. Ensure the top is level and clean off any excess glue.



If the capping is purchased, then apply a layer of lip glue to the top of the final block and then press the capping into place ensuring that it is level and wiping off any excess glue.

# Instructions - Additional log store



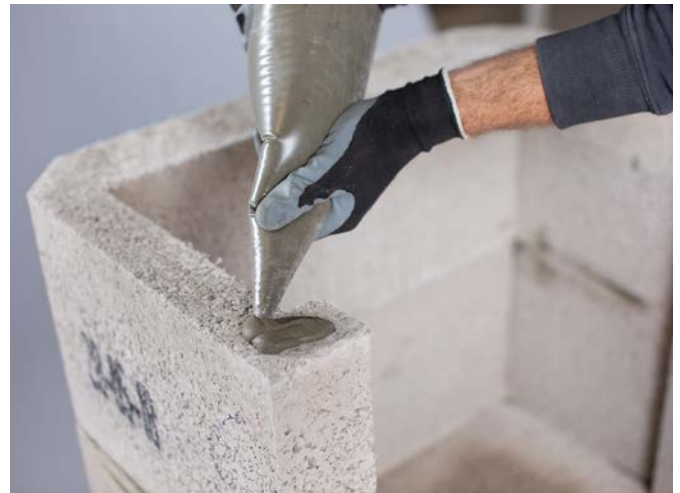
The additional log stores can be placed to either side or on both sides of the fireplace to suit your outdoor area plans.



Place the C shaped section onto the prepared surface alongside the main fireplace and apply lip glue adhesive around the top edge of the section.



Place the next C shaped section on top of the first one.



Apply a layer of lip glue adhesive around the top edge of the C section.



Carefully lower the top slab into position and ensure the surface is level.



The completed log store can now be rendered as part of the overall rendering procedure. Follow the procedures shown on p.5 with regards to preparation and then rendering of the log store.

# After completion

Once build and rendering is complete, please do not use for at least 72 hours after completion.

On first use, always light a small fire first and increase the size of the fire once the firechest has fully dried out. Only use dried and seasoned wood for the fire. Do not burn plastic or waste products.

## Guarantee

### INTRODUCTION

We are confident in our products and so offer you (the owner) a generous guarantee in relation to the Garden Fireplace.

Provided that you comply in full with your responsibilities (below) and subject to the Small Print (below), we guarantee to you that the fireplace will be free from defects on delivery to you via pallet.

Any blocks or firebricks which are cracked or damaged at the time of delivery will be replaced free of charge.

This guarantee does not cover any major impact to the fireplace (such as wear and tear, wind damage) once the item has been constructed and rendered.

As the fireplace is an outdoor product, standard wear and tear will occur and any structural damage would have to be investigated. In the unlikely event that the fireplace becomes defective during the guarantee period, we will provide replacement component parts and render material free of charge.

### YOUR RESPONSIBILITIES

To benefit from our guarantee, this product will be registered to the address where we delivered it. Please inform us if the fireplace was installed elsewhere.

### HOW TO CLAIM UNDER YOUR GUARANTEE

To claim under your guarantee, please email us at [sales.uk@schiedel.com](mailto:sales.uk@schiedel.com). You will be asked to provide proof that you have complied in full with the terms of usage of the fireplace and that only dried and seasoned firewood has been used as a fuel.

## If you are an installer / builder

If you are a regular builder of our Garden Fireplaces, then please get in touch with us. We are looking for competent builders throughout the UK and Republic of Ireland to promote as "recommended builders" in certain areas.

Builders are able to benefit from joining our Installer Loyalty scheme with points awarded for installations, which can then be redeemed for vouchers. Please see details at [www.schiedelrewards.co.uk](http://www.schiedelrewards.co.uk).

## Also from Schiedel: The Celsius, an all-in-one stove and volcanic chimney package

The same material used in the Garden Fireplace; formed from pumice from the Hekla Volcano



**Schiedel Isokern**  
Unit 8/9 Block A, Holton Road,  
Holton Health Industrial Est., Poole  
BH16 6LG  
T +44 1202 861650

sales.uk@schiedel.com  
www.schiedel.com/uk

The Celsius system is a DEFRA exempt, A+ rated system, which allows zero distance to combustibles.



The ideal stove and chimney combined package for any house development, log cabin, conservatory or outhouse.

Get in touch for more information.

Follow us on Social Media @SchiedelUK



**A standard**  
INDUSTRIES COMPANY