



SAFE
INSTALLATION

Schiedel Protect Box

Installation Instructions

SCHIEDEL

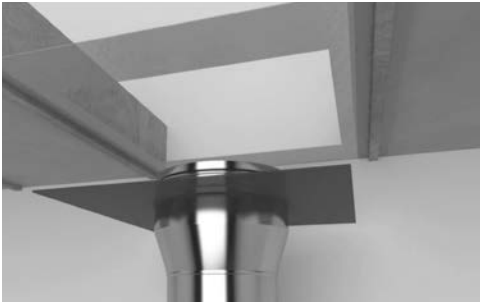
Installation Instructions



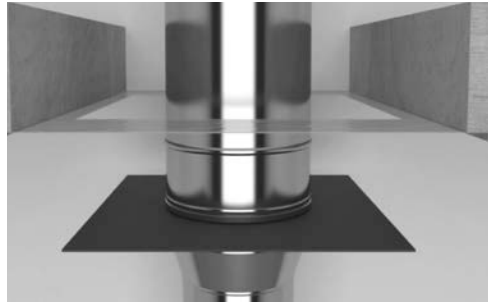
Existing vapor barrier



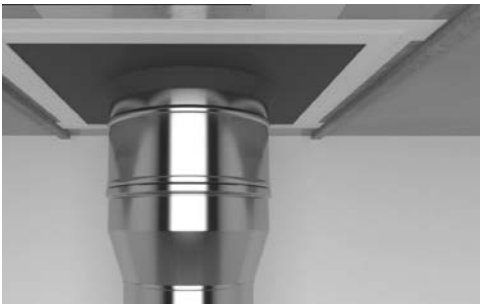
Square section cut out of barrier



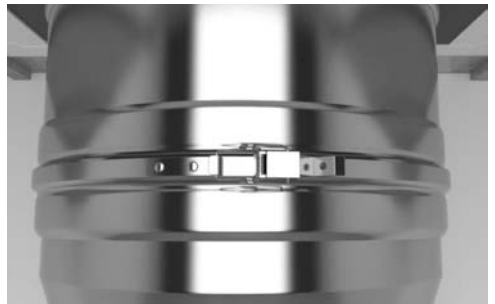
EPDM mat pulled down onto outer bead of pipe



EPDM mat pulled up over joint until level with barrier



EPDM is attached to the vapour barrier using special tape supplied with EPDM kit



Locking Band connected

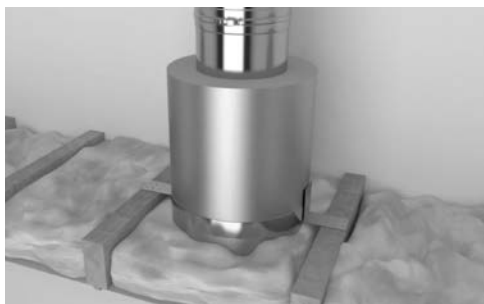
Installation Instructions



Protect Box lowered into position and fastened securely to the joists



Additional components installed and secured with locking bands



Insulation replaced around Protect Box



2-piece fire stop plate attached securely to joists



Ready!

SCHIEDEL

Schiedel Chimney Systems Ltd.

Crowther Estate

Washington

Tyne & Wear NE38 0AQ

Tel. +44 (0)191 416 1150

sales.uk@schiedel.com | www.schiedel.com/uk

A sta^hndard
INDUSTRIES COMPANY