



Austrian Institute of Construction Engineering
 Schenkenstrasse 4 | T+43 1 533 65 50
 1010 Vienna | Austria | F+43 1 533 64 23
 www.oib.or.at | mail@oib.or.at



European Technical Assessment

ETA-23/0439
of 12.07.2024

General part

Technical Assessment Body issuing the European Technical Assessment

Österreichisches Institut für Bautechnik (OIB)
Austrian Institute of Construction Engineering

Trade name of the construction product

Schiedel IGNIS PROTECT ULTRA
Schiedel IGNIS PROTECT ULTRA superwool

Product family to which the construction product belongs

Construction product for penetration of walls and floors by components for conveying products of combustion

Manufacturer

Schiedel GmbH
Friedrich-Schiedel-Straße 2-6
4542 Nußbach
AUSTRIA

Manufacturing plant

Schiedel GmbH
Friedrich-Schiedel-Straße 2-6
4542 Nußbach
AUSTRIA

This European Technical Assessment contains

8 pages including 2 annexes which form an integral part of this assessment.

This European Technical Assessment is issued in accordance with Regulation (EU) No 305/2011, on the basis of

European Assessment Document (EAD)
060014-00-0802 "Construction product for penetration of walls and floors by components for conveying products of combustion".

This European Technical Assessment replaces

European Technical Assessment ETA-23/0439 of 01.08.2023.

Translations of this European Technical Assessment in other languages shall fully correspond to the original issued document and should be identified as such.

Communication of this European Technical Assessment, including transmission by electronic means, shall be in full. However, partial reproduction can be made with the written consent of the Österreichisches Institut für Bautechnik. Any partial reproduction has to be identified as such.

electronic copy
electronic copy
electronic copy
electronic copy
electronic copy
electronic copy
electronic copy

Specific parts

1 Technical description of the product

Schiedel IGNIS PROTECT ULTRA and Schiedel IGNIS PROTECT ULTRA superwool consists of fire protective boards Type 9 according to EAD 350142-00-1106 and thermal insulation made of mineral wool (thermal insulation boards, prefabricated boards/shells and mineral wool blanket; with thickness according to Annex 1), assembled in the manufacturing plant. The room sided surface of the product is covered by a lamination made of metal foil. The components are joint together by means of glueing (inorganic adhesive) according to Annex 1.

The fire protective boards, the thermal insulation made of mineral wool, the lamination foil made of metal and the inorganic adhesive are defined in the technical documentation deposited with the Technical Assessment Body Österreichisches Institut für Bautechnik.

The products according to this ETA do not include sealants/seals.

Designs for Schiedel IGNIS PROTECT ULTRA and Schiedel IGNIS PROTECT ULTRA superwool are given in Annex 1.

Concerning product packaging, transport, storage, maintenance, replacement and repair it is the responsibility of the manufacturer to undertake the appropriate measures and to advise his clients on the transport, storage, maintenance, replacement and repair of the product, as he considers necessary.

2 Specification of the intended use(s) in accordance with the applicable European Assessment Document (hereinafter EAD)

Schiedel IGNIS PROTECT ULTRA is intended to be used for following intended use:

- Protection of adjacent combustible units against heating due to conveyance of combustion products by means of single wall metallic flue liner with inner diameter up to 180 mm and up to temperature class T450 and soot fire resistance class G according to EN 1443.
- Protection of adjacent combustible units against heating due to conveyance of combustion products by means of a double wall metallic flue liner (with minimum 25 mm thermal insulation) with inner diameter up to 180 mm and up to temperature class T450 and soot fire resistance class G according to EN 1443.

Schiedel IGNIS PROTECT ULTRA superwool is intended to be used for following intended use:

- Protection of adjacent combustible units against heating due to conveyance of combustion products by means of single wall metallic flue liner with inner diameter up to 180 mm and up to temperature class T450 and soot fire resistance class G according to EN 1443.
- Protection of adjacent combustible units against heating due to conveyance of combustion products by means of a double wall metallic flue liner (with minimum 25 mm thermal insulation) with inner diameter up to 180 mm and up to temperature class T600 and soot fire resistance class G according to EN 1443.

Note: The component of conveying the combustion products (metallic flue liner, single or double wall) is not part of **Schiedel IGNIS PROTECT ULTRA** and **Schiedel IGNIS PROTECT ULTRA superwool**.

The provisions made in this European Technical Assessment are based on an intended working life of the construction product with fire protection boards and thermal insulation material made of mineral wool for the intended use of 10-25 years, depending on the product used for conveyance of combustion products, when installed in the works (provided that the fire protection boards and

thermal insulation material made of mineral wool are subject to appropriate installation), provided that the construction product is subject to appropriate use and maintenance.

It is the responsibility of the manufacturer to ensure that each delivery contains proper information for the use of the construction product including general guidance on the basis of the European Technical Assessment.

The indications given on the working life cannot be interpreted as a guarantee given by the producer or the Technical Assessment Body, but are to be regarded only as a means for choosing the appropriate construction product in relation to the expected, economically reasonable working life of the works.

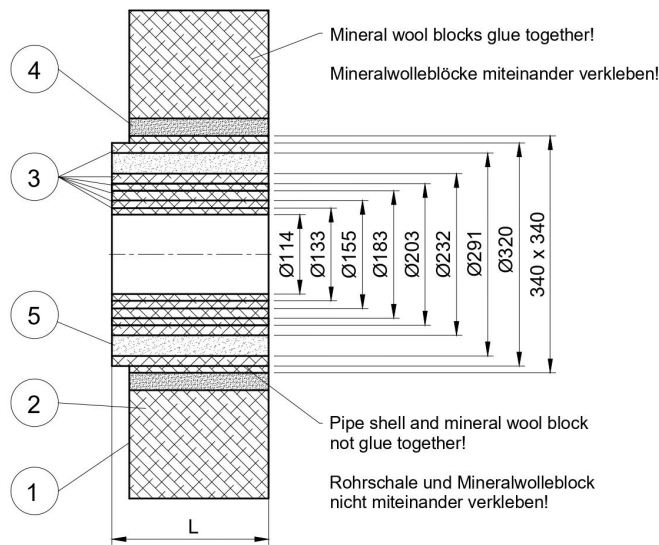
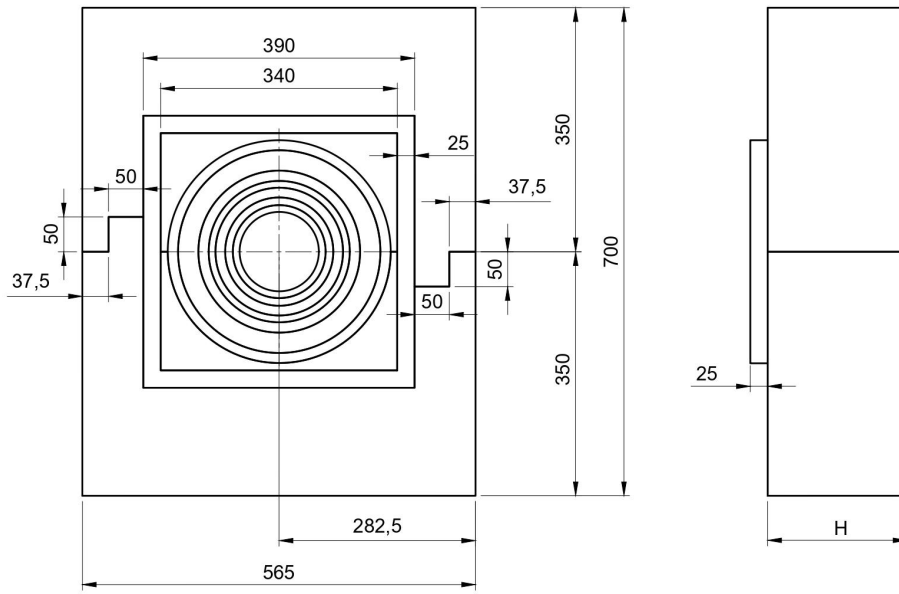
3 Performance of the product and references to the methods used for its assessment

3.1 Performance of the product

Table 1: Performance of the product in relation to the essential characteristics

Essential characteristic	Method of assessment	Performance
Basic requirement for construction works 2: Safety in case of fire		
Resistance to fire from internal to external (sootfire resistance and thermal shock resistance)	EAD, Clause 2.2.1	<p><u>Without superwool:</u> T450 and G (single wall and double wall)*</p> <p><u>With superwool:</u> T450 and G (single wall)*</p> <p>T600 and G (double wall)*</p>
Reaction to fire (of the components)	EAD, Clause 2.2.2	A1
Propensity to undergo continuous smouldering (Thermal insulation material: Thermal insulation boards and prefabricated boards/shells)	EAD, Clause 2.2.3	The thermal insulation material used does not show propensity to undergo continuous smouldering.
Propensity to undergo continuous smouldering (Thermal insulation material: Mineral wool blanket)	EAD, Clause 2.2.3	No performance assessed**
Basic requirement for construction works 3: Hygiene, health and environment		
Tightness	EAD, Clause 2.2.4	No performance assessed
<p>Classification Txxx G does include the use of the product for classification Txxx O.</p> <p>*Dimension and density of thermal insulation used in the assessment: Thermal insulation boards with density 103,5 kg/m³, prefabricated boards/shells with 108 kg/m³ and, in case of superwool, mineral wool blanket with density 115,2 kg/m³. Tolerances laid down in control plan. Dimensions according to Annex A1.</p> <p>**The mineral wool blanket has no binders; to form the blanket the fibre is needed.</p>		

electronic copy



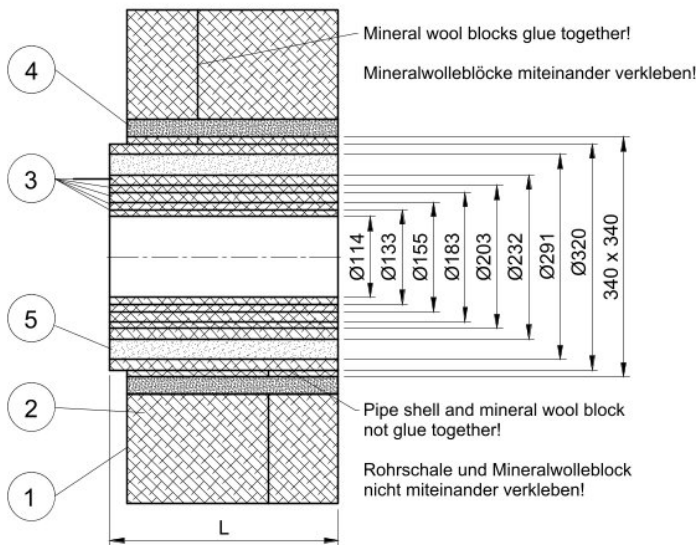
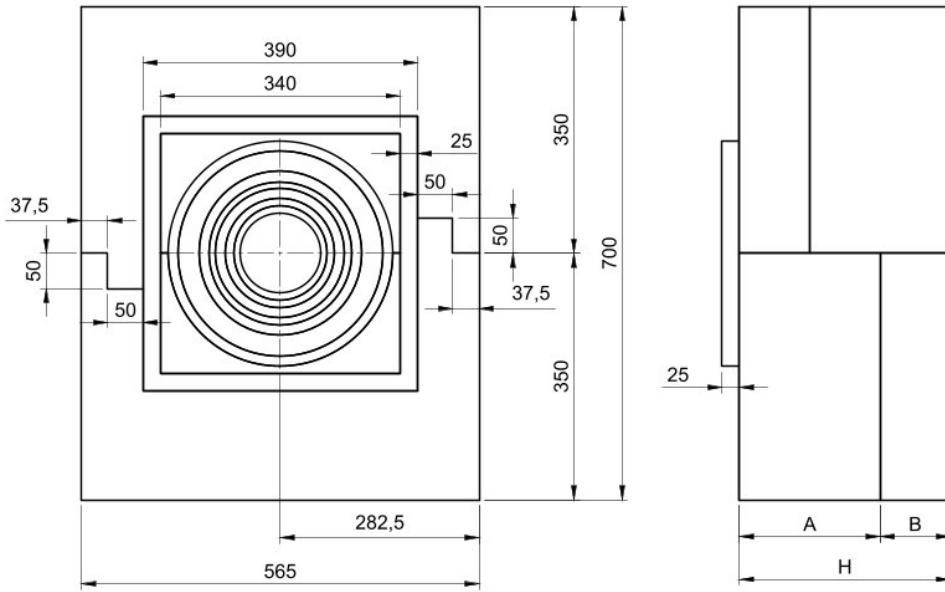
LEGEND:

- 1 Lamination made of metal foil
Alukaschierung
- 2 Thermal insulation boards
Mineralwolle Dämmung
- 3 Prefabricated boards/ shells
Mineralwolle Dämmschalen
- 4 Fire protection board
Brandschutzplatte
- 5 Mineral wool blanket
Mineralwolle Matte
or
Prefabricated boards/ shells
Mineralwolle Dämmschalen

H	L
100	125
150	175
200	225

Schiedel IGNIS PROTECT ULTRA
 With or without superwool
 Thickness 100 – 200 mm

Annex 1 of ETA-23/0439
 of 12.07.2024



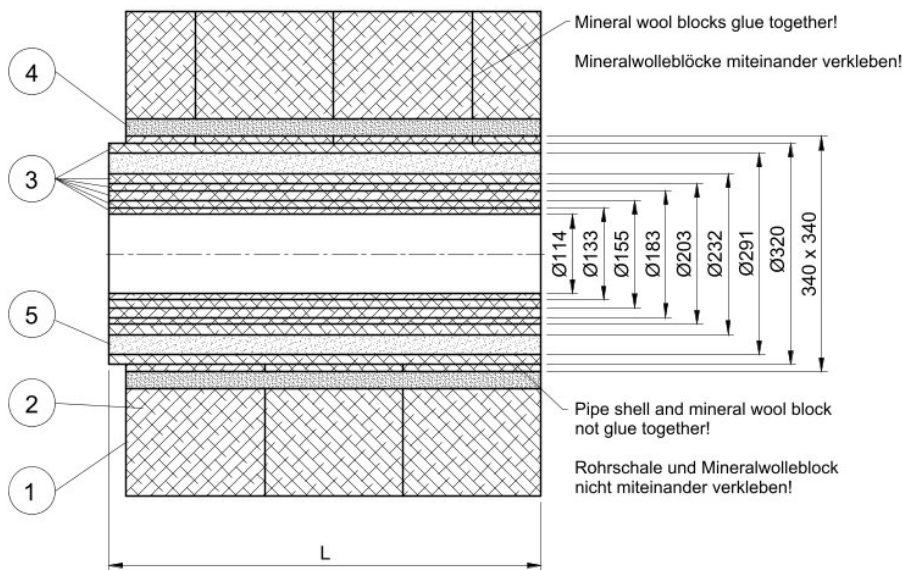
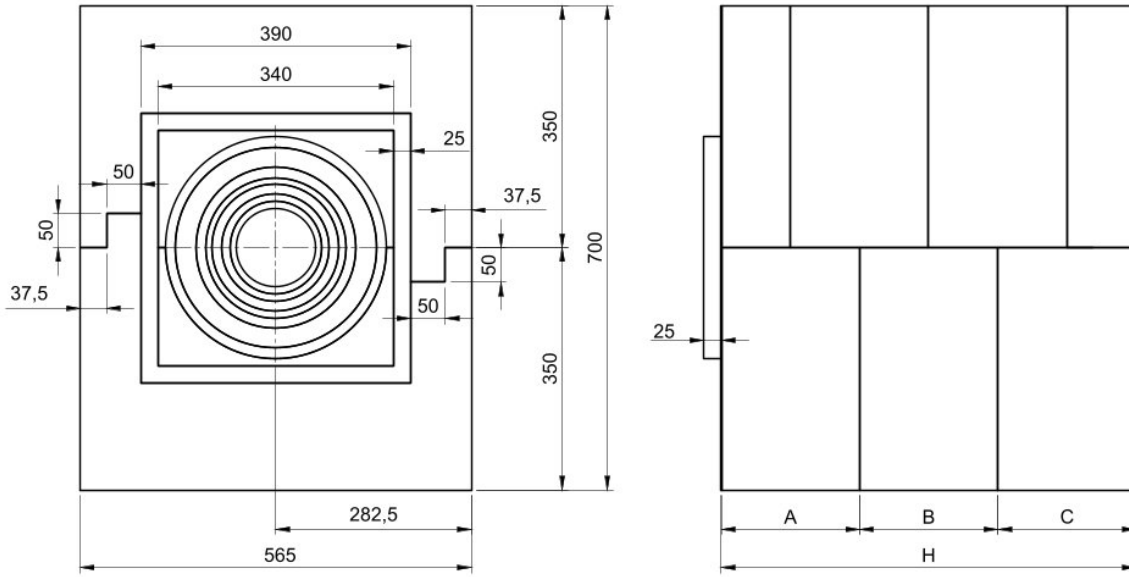
H	A	B	L
250	150	100	275
300	200	100	325
350	200	150	375
400	200	200	425

LEGEND:

- 1 Lamination made of metal foil
Alukaschierung
- 2 Thermal insulation boards
Mineralwolle Dämmung
- 3 Prefabricated boards/ shells
Mineralwolle Dämmschalen
- 4 Fire protection board
Brandschutzplatte
- 5 Mineral wool blanket
Mineralwolle Matte
or
Prefabricated boards/ shells
Mineralwolle Dämmschalen

Schiedel IGNIS PROTECT ULTRA
 With or without superwool
 Thickness 250 – 400 mm

Annex 1 of ETA-23/0439
 of 12.07.2024



H	A	B	C	L
450	150	200	100	475
500	100	200	200	525
550	150	200	200	575
600	200	200	200	625

LEGEND:

- 1 Lamination made of metal foil
Alukaschierung
- 2 Thermal insulation boards
Mineralwolle Dämmung
- 3 Prefabricated boards/ shells
Mineralwolle Dämmschalen
- 4 Fire protection board
Brandschutzplatte
- 5 Mineral wool blanket
Mineralwolle Matte
or
Prefabricated boards/ shells
Mineralwolle Dämmschalen

Schiedel IGNIS PROTECT ULTRA
 With or without superwool
 Thickness 450 – 600 mm

Annex 1 of ETA-23/0439
 of 12.07.2024